

Deepak Coal Trade & Merchant Pvt. Ltd.

Registered Office :-

Sita Kund
PO. - Buniyadgunj
PS. - Mufassil
Dist. - Gaya (Bihar)

Baniya Toli
PO. - Morabadi
PS. - Bariatu
Dist. - Ranchi (Jharkhand)

Mob. No. - 7209905803, 8863012127, 8581095500

Company Details

- ▶ CIN of the company is U51909JH2016PTC909102
- ▶ Registered Add: Baniya Toli, PO. - Morabadi, PS. - Bariatu, PS No. 192, Ranchi, Jharkhand - 834009
- ▶ PAN No : AAGCD3924R
- ▶ GST : 20AAGCD3924R1ZH
- ▶ EPF No: JHRAN2189753000
- ▶ ESIC : 60001653910001099
- ▶ Electrical License No. : JH/EC/3925
- ▶ Bank Name : ICICI Bank
- ▶ IFSC : ICIC0002519
- ▶ Bank A/C No : 251905000314

ABOUT US



Deepak Coal Trade & Merchant Pvt. Ltd. is a young leading company promoted and managed by a team of technocrats & professional working towards excellence in telecom sector and believe in pursuing business through innovation and technology . Our team comes with several years of industry experience and comprise of high motivated set of specialist & industry experts.

➤ VISION

To be a leader in the industry by providing enhanced products, services ,relationship and profitability. Our vision is to provide quality products & services that exceeds the expectations of our esteemed customers. We firmly believe that our customers are the reason for our existence, and greatly respect the trust that they place in us. We grow through creativity and innovation. We integrate honesty, integrity and business ethics into all aspects of our business functioning.

➤ MISSION

To build long term relationships with our customers. We strive towards delighting our customers at every opportunity through exceptional customer service. Our future looks bright as we continue developing a strong base of key customers and increasing the assets and investments of the company.

Scope of Work & Supply

Civil Work

- Tower foundation
- Fencing Work

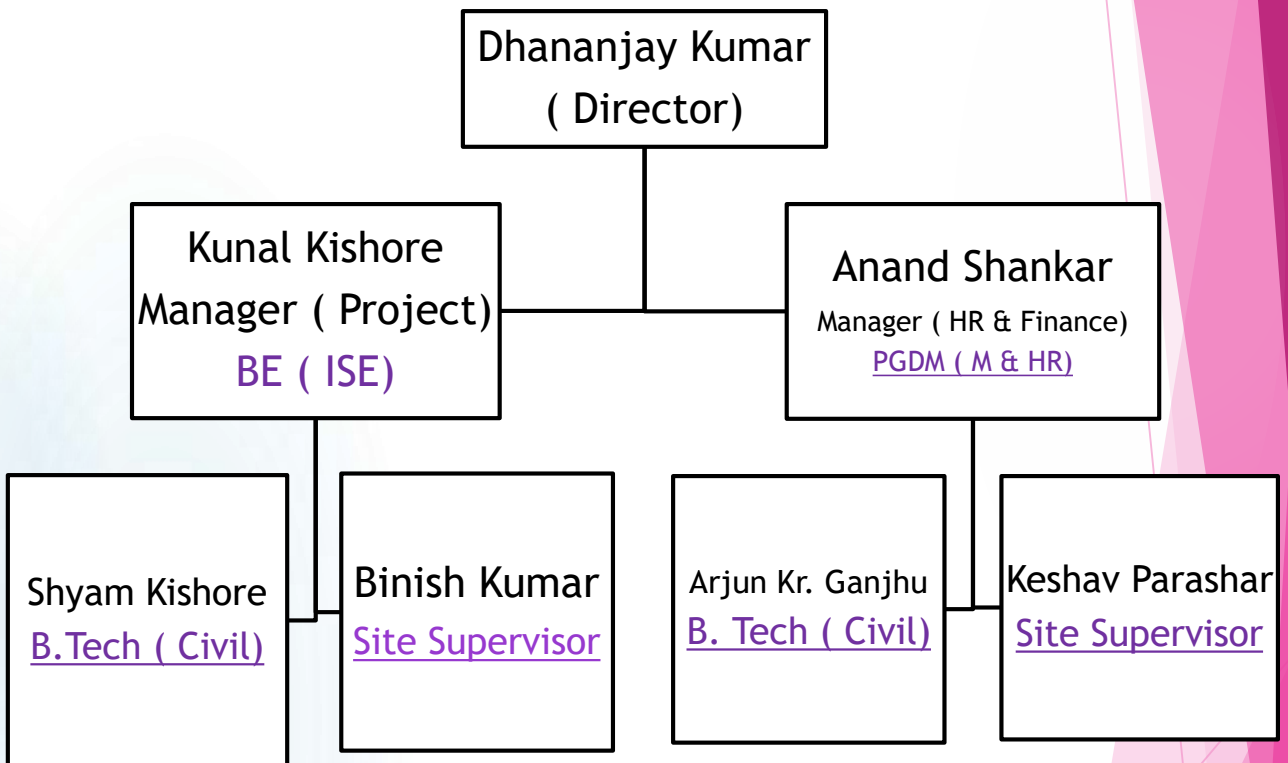
Electrical Work

- Transformer and electric line installation

Supply & Transportation Work

- Any kind of Material Transportation
- Supply of construction material .

The Team Organization Chart



- Team Available - 08 No. (Civil)
- 10 No. (EB)

➤ Available Assets

- 1) JCB - 01 No.
- 2) Tractor - 02 No.
- 3) Mixture Machine - 02 No.
- 4) Pick Up - 01 No.